

PRECAST
SEGMENTAL

ELEVATED
GUIDEWAY

BRIDGE

RÉSEAU EXPRESS MÉTROPOLITAIN (REM) GREATER MONTRÉAL, CANADA

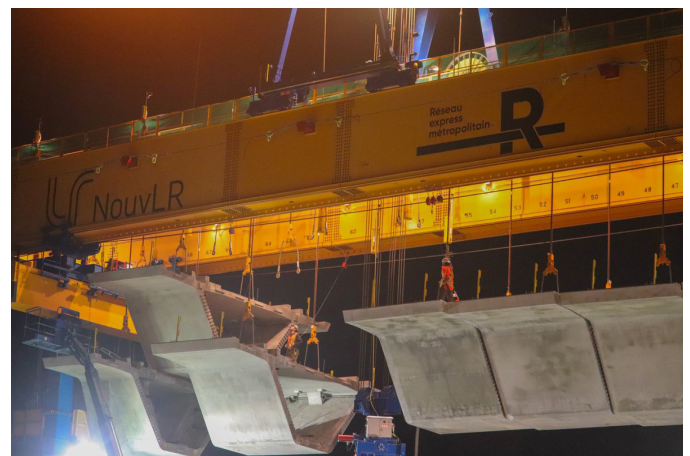


Photo credit: Réseau Express Métropolitain

The Réseau Express Métropolitain (REM) is a new fully automated and electric light rail network. It will include 26 stations and span the greater Montréal area with 67km of tracks in both directions – by comparison, the current metro network is 69.2km long. Providing services 20 hours a day, 7 days a week.

This new light metro rapid transit system features about 21.5km of elevated structures including 16.2km of segmental guideway in the Sainte-Anne-De-Bellevue, airport, and part of Deux Montagnes antennas.

SYSTRA IBT is responsible for the complete elevated guideway structure on the Sainte-Anne-de-Bellevue, Airport, and Deux-Montagnes antennas which make up approximately 16km of the 67km REM network.



ESSENTIALS:

CLIENT/OWNER:

CDPQ Infra Inc. / Project REM s.e.c.

CONTRACTOR:

NouvLR General Partnership: SNC-Lavalin Major Projects Inc., Dragados Canada Inc., Groupe AECOM Québec Ltée, EBC Inc. Pomerleau Inc.

PRIME CONSULTANT:

SNC-Lavalin Inc.
AECOM Consultants, Inc.

SUBCONTRACTOR FOR GUIDEWAY ERECTION:

Rizzani de Eccher

BRIDGE DESIGN CONSULTANT:

SYSTRA IBT

SYSTRA IBT'S ROLE:

Detailed design of guideway and substructures.

WWW.SYSTRAIBT.COM

SYSTRA
INTERNATIONAL
BRIDGE
TECHNOLOGIES